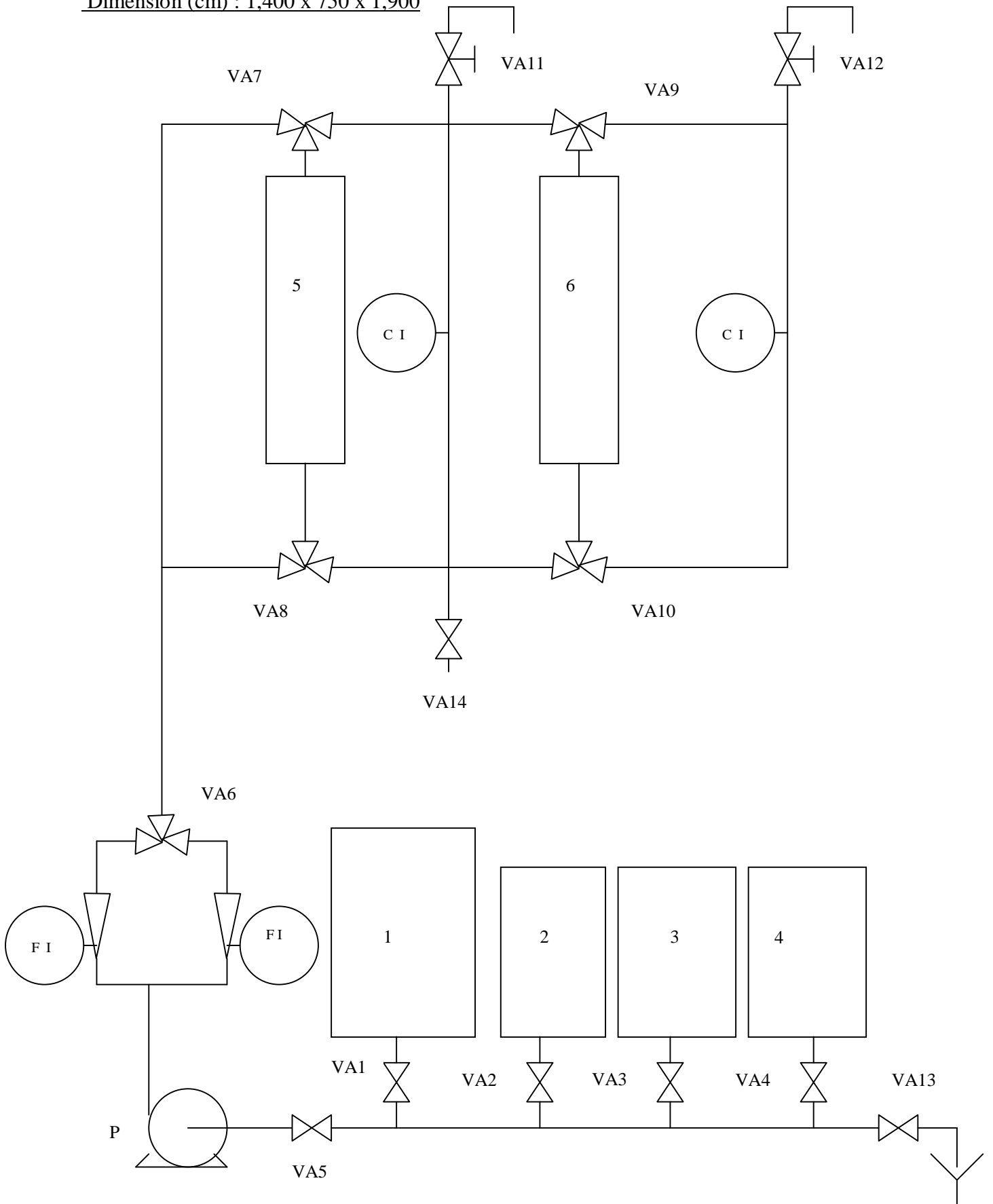


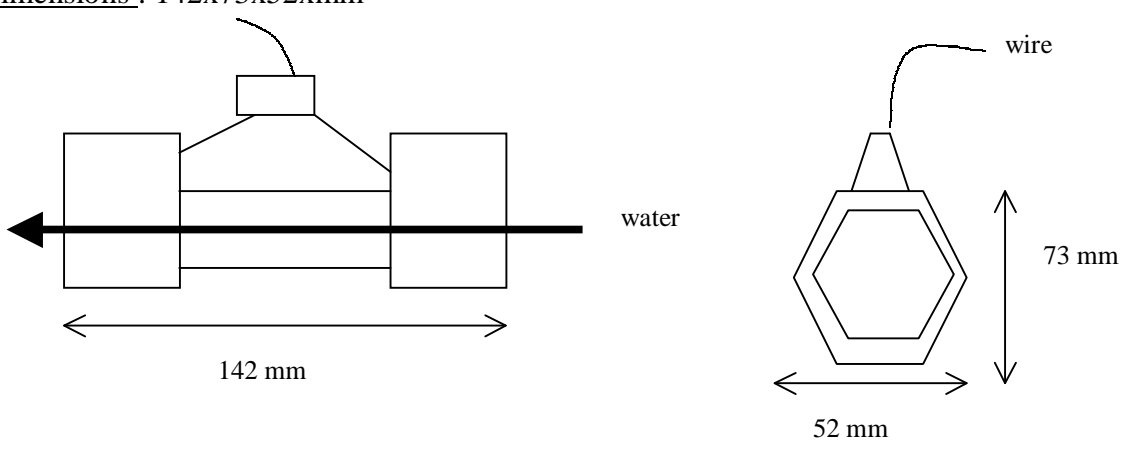
Ion exchange pilot

Dimension (cm) : 1,400 x 750 x 1,900



Caption :

code	general data	more specific data
Valves		
VA1	Manual valve for raw water inlet or discharge	spherical plug valve, PVC ; gasket PTFE, DN 10
VA2	Manual valve for deionised water inlet or discharge	spherical plug valve, PVC ; gasket PTFE, DN 10
VA3	Manual valve for acid regeneration inlet or discharge	spherical plug valve, PVC ; gasket PTFE, DN 10
VA4	Manual valve for base regeneration inlet or discharge	spherical plug valve, PVC ; gasket PTFE, DN 10
VA5	Manual valve for general feed	
VA6	Manual valve to chose flowmeter	
VA7	Manual three way valve, to chose either raw water feed (downward) or decationised water outlet	spherical plug valve, type L, PVC ; gasket PTFE, DN 10
VA8	Manual three way valve, to chose either raw water feed (upward), or by-pass of the decationisation	spherical plug valve, type T, PVC, gasket PTFE, DN 10
VA9	Manual three way valve, to chose either decationised water feed (downward), or deionised water outlet	spherical plug valve, type L, PVC ; gasket PTFE, DN 10
VA10	Manual three way valve, to chose either decationised water feed (upward), or deionised water outlet	spherical plug valve, type L, PVC ; gasket PTFE, DN 10
VA11	Diaphragm valve, to control raw water flow feeding cation exchange resin	PVC ; Diaphragm VITON, DN10
VA12	Diaphragm valve, to control raw water flow feeding ion exchange resins	PVC ; Diaphragm VITON, DN10
VA13	Manual valve for discharge of solutions	
VA14	Manual valve for discharge of treated water	
Tanks		
1	Parallelepiped for raw water, transparent PVC	100 L
2	Parallelepiped for treated water, transparent PVC	50L
3	Parallelepiped for acid or NaCl, transparent PVC	25L
4	Parallelepiped for base, transparent PVC	25L
Columns		
5	Altuglas for <u>cation</u> exchange resin	<u>internal diameter</u> : 50 mm <u>height</u> : 450 mm stainless steel (304L) <u>screen</u> to support and stop resin : mesh 0.5mm total <u>volume</u> for resin : 0.8L
6	Altuglas for <u>anion</u> exchange resin	<u>internal diameter</u> : 50 mm

		<u>height</u> : 450 mm stainless steel (304L) <u>screen</u> to support and stop resin : mesh 0.5mm total <u>volume</u> for resin : 0.8L
Indicators		
CI	conductivity probe and transmitter Hanna Instruments France tel : 88-769188 <u>Probe</u> : HI7635 in-line with ATC and 3 meter cable ; use 4 Pin potentiometric measuring method <u>transmitter</u> : HI 8936 C	<u>range</u> 0-2,000 $\mu\text{S/cm}$ <u>frequency for measure</u> : 3 kHz <u>Measure deviation</u> : +/- 2% <u>analog output</u> 4-20mA <u>temperature compensation</u> <u>body material</u> : polypropylene <u>working T°</u> : 0 to 80°C <u>max pressure</u> : 5 bar <u>weight</u> : 330 grams
	<u>dimensions</u> : 142x73x52xmm 	
FI	Flow indicator , rotameter, for raw water	one FI : range 5-60 L/h One FI : 2.5 – 25 L/h transparent graduated PVC, DN 10
Pump		
P	centrifugal pump Siebec, type M15 tel : (07041) 83057	polypropylen impeller housing; seal O-ring Viton ; 1300L/h at 3m water column ; magnetic drive ; electric single-phase motor, 220V, 50Hz, 0.4A 0.045kW 3,000 rpm size : 298 x 100 mm Height : 126 mm weight : 3.1 kg inlet and outlet diameter : 14 x 20